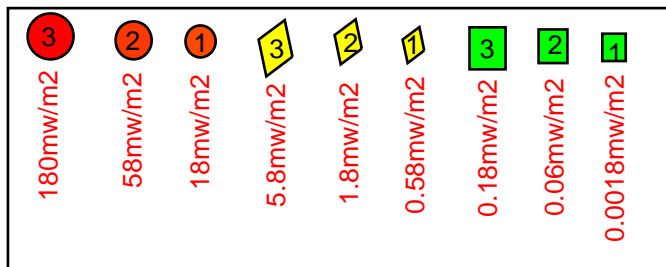
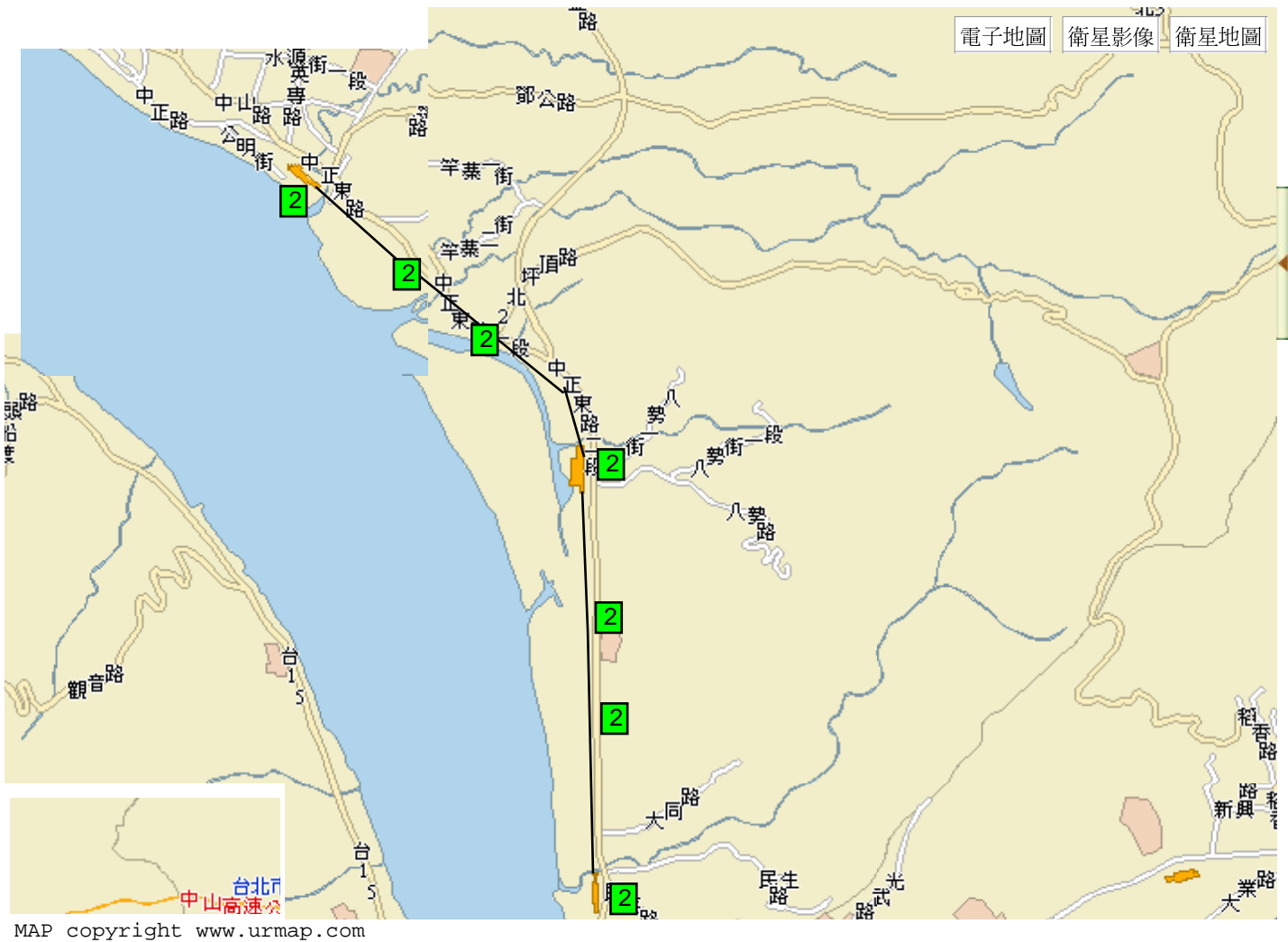


TAIPEI MRT Tamsui line EMF measurement 06/23/2006 11:23AM

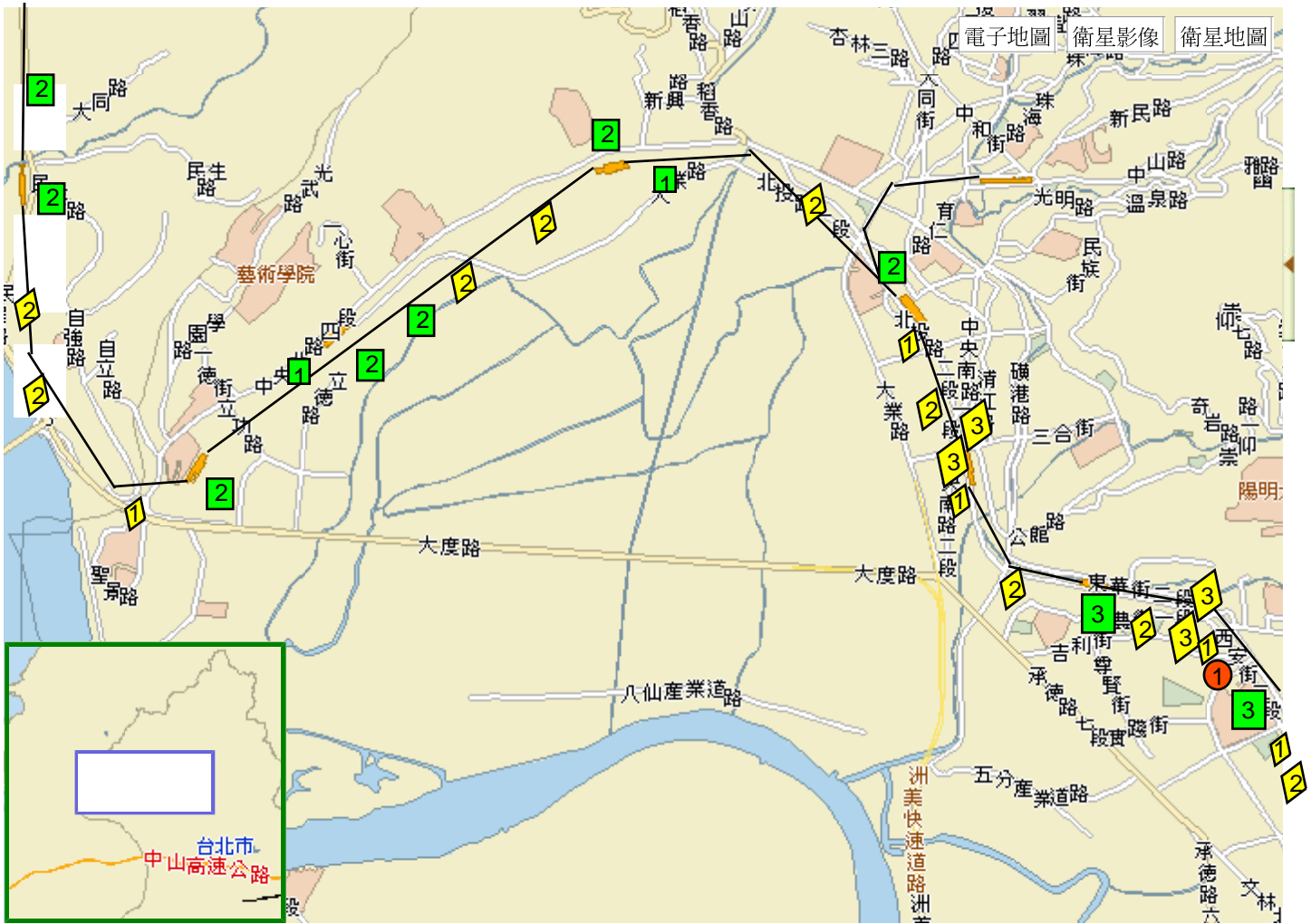


"CORNET" ED8A RF power meter LED indications

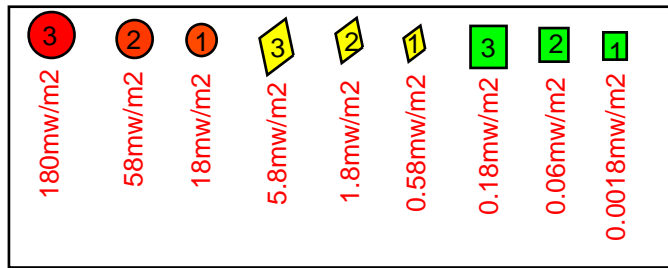
--thanks for www.wretch.cc and www.urmap.com for using the city map

--This is experiment EMF measurement from inside MRT train window, the shielding of train could cause 5dBm difference.

TAIPEI MRT Tamsui line EMF measurement 06/23/2006 11:23AM



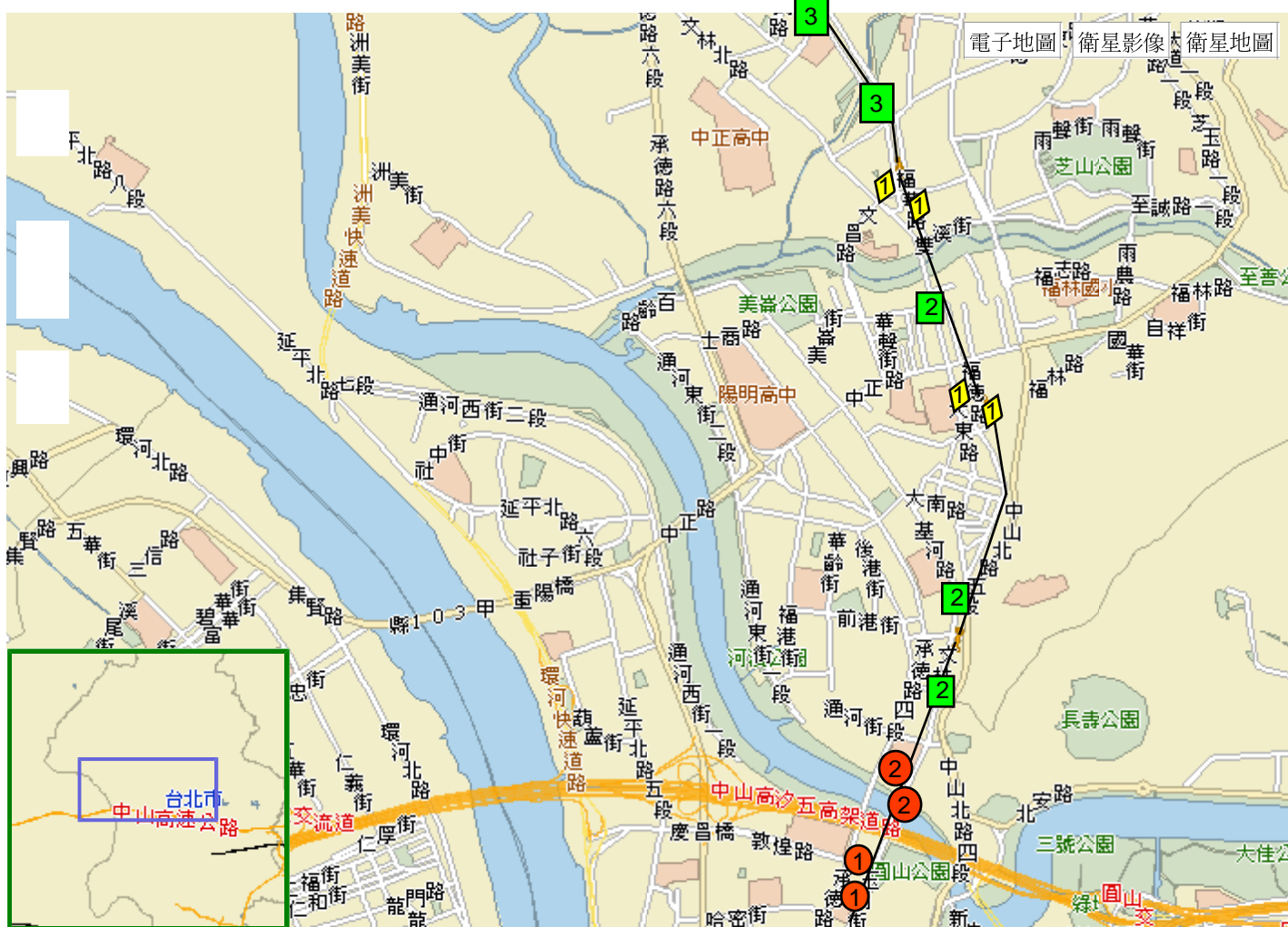
MAP copyright www.urmap.com



"CORNET" ED8A RF power meter LED indications

--thanks for www.wretch.cc and www.urmap.com for using the city map

TAIPEI MRT Tamsui line EMF measurement 06/23/2006 11:23AM



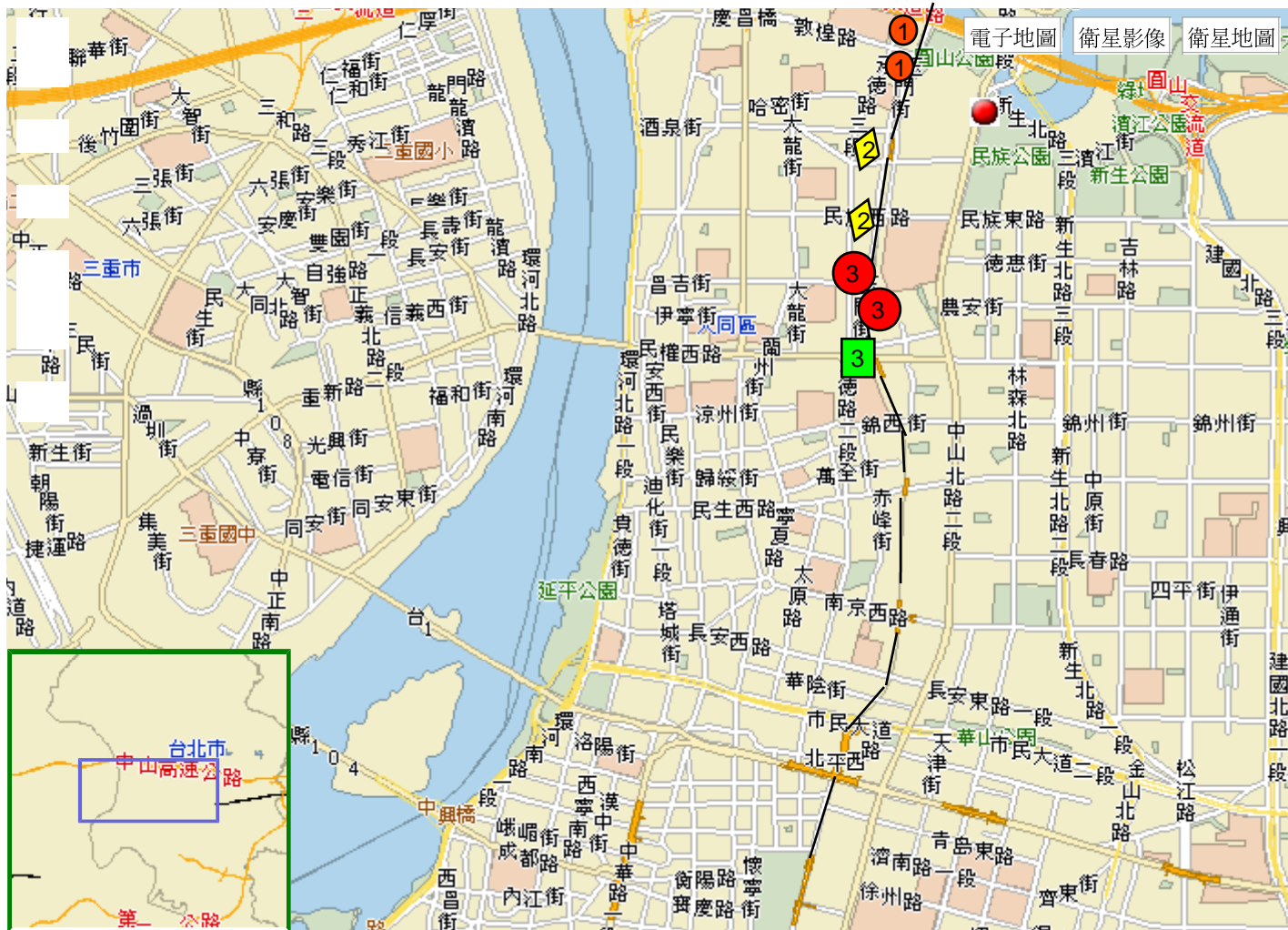
MAP copyright www.urmap.com

3	2	1	3	2	1	3	2	1
180mw/m2	58mw/m2	18mw/m2	5.8mw/m2	1.8mw/m2	0.58mw/m2	0.18mw/m2	0.06mw/m2	0.0018mw/m2

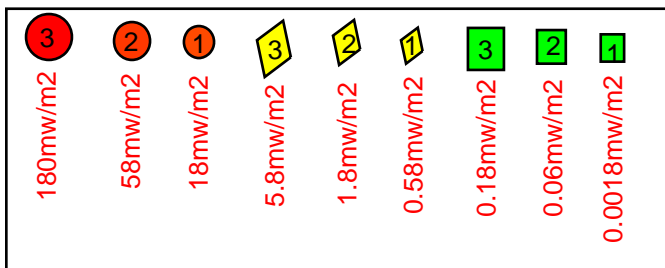
"CORNET" ED8A RF power meter LED indications

--thanks for www.wretch.cc and www.urmap.com for using the city map

TAIPEI MRT Tamsui line EMF measurement 06/23/2006 11:23AM



MAP copyright www.urmap.com



"CORNET" ED8A RF power meter LED indications
 --thanks for www.wretch.cc and www.urmap.com for using the city map